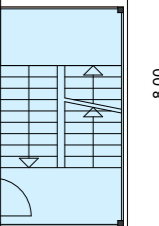
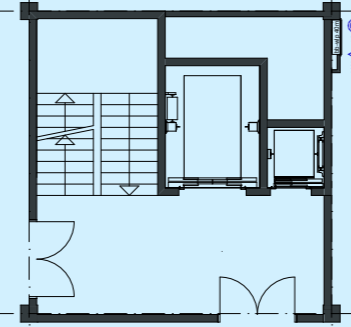
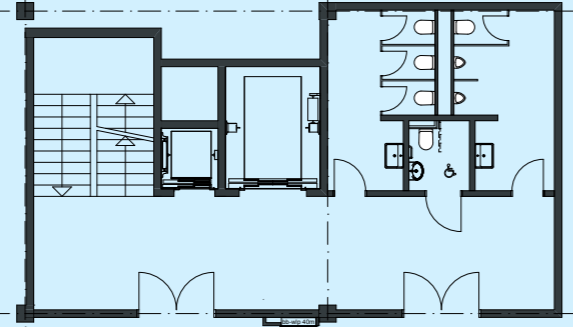


Bodenbelastung 300 kg/m²

Raumhöhe 2.48m / 2.52m

Mietfläche = 2775 m²



7.87⁵
8.00
8.00
8.00
8.00
8.00
8.00
4.23
3.77

1
2
3
4
5
5.1

32.51⁵

40.00

32.52

3.77

6

F

G

H

I

J

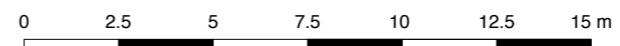
40.00

3.77

Objekt: Neubau Nef **TechPark**, Eichwiesstrasse 18c/18d, 8645 Jona

3.Obergeschoss 3.Etappe Vermietungsplan

Plannummer	305
Masstab	1 : 200
Datum / Gez.	25.10.2019
Plangrösse	A3



BODENBELASTUNG E3

1.UG	500 kg/m ²
EG	500 kg/m ²
1.OG - DG	300 kg/m ²